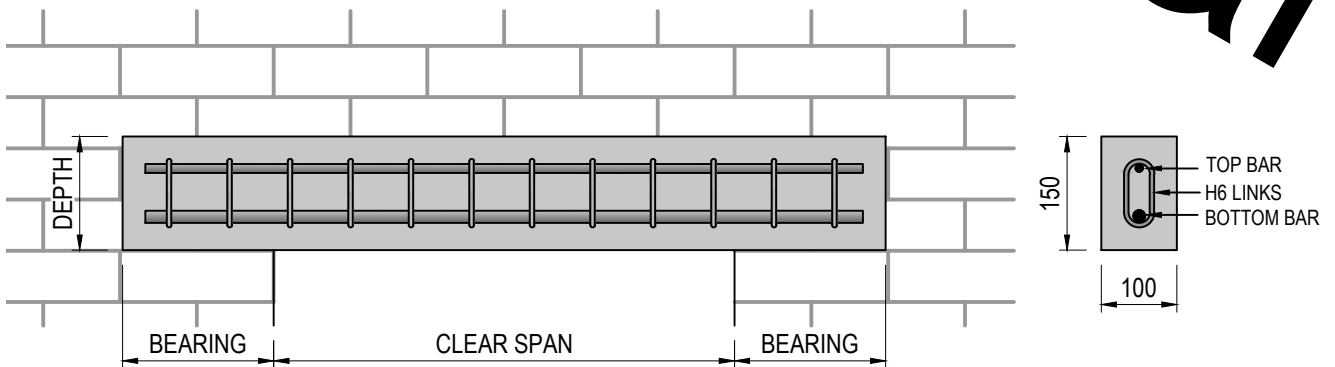


APC - 100mm WIDE X 150mm DEEP PRECAST CONCRETE LINTEL

NOTES:

1. TOP AND BOTTOM COVER TO LINK = 30mm
2. CONCRETE COVER IS BASED ON AN EXPOSURE CLASS OF XC3/4 WITH A MINIMUM COVER OF 25mm AND A DEVIATION OF 5mm
3. CONCRETE STRENGTH C35/45
4. ULS LOADS PROVIDED ARE PERMITTED LOADS IN ADDITION TO THE SELF WEIGHT OF THE LINTELS
5. LOAD CAPACITY AND BEARING LENGTHS ASSUME UDL LOADING ONLY. ANY OTHER TYPES OF LOADING OR COMBINATION REQUIRES VERIFICATION BY THE LINTEL SUPPLIER.
6. LINTEL SELF WEIGHT (UNFACTORED) = 0.36kN/m
7. DESIGN OF LINTELS IS TO EN1992-1-1
8. DETAILING OF REINFORCEMENT IS TO EN1992-1-1 AND TO BS8666
9. CALCULATIONS ARE BASED ON $\gamma_s=1.05$ AND $\gamma_c=1.4$, TO EN1992-1-1 ANNEX A.
10. SOLID BLOCK, BRICK OR CONCRETE BEARING PAD TO SUPPORT DIRECTLY UNDER LINTEL. NO CUT BLOCKS TO BE USED.
11. BLOCK STRENGTH FOR APPLIED BEARING AREA NEEDS TO BE CONFIRMED BY STRUCTURAL DESIGNER
12. BLOCK STRENGTHS MIN 7.5 N/mm²
13. ALL VERTICAL FACES OF LINTELS WOULD HAVE A TAPER OF APPROX. 5mm

LINTEL SIZE							100mm WIDE X 150mm DEEP						
Top Bar		1No. H10		1No. H10		1No. H10							
Btm Bar		1No. H10		1No. H12		1No. H16							
Links		6mm \varnothing links @ 80mm c/c											
CLEAR SPAN [m]	ULS [kN/m]	BEARING Min [mm]	ULS [kN/m]	BEARING Min [mm]	ULS [kN/m]	BEARING Min [mm]	ULS [kN/m]	BEARING Min [mm]					
0.5	6.05	200	72.0	200	92.5	200							
0.7	3.6	200	50.2	200	69.4	200							
0.9	2.4	200	33.5	200	46.5	200							
1.2	1.8	200	28.0	200	39.0	200							
1.5	1.5	200	20.5	200	28.5	200							
1.8	1.2	200	13.7	200	19.2	200							
2.0	1.0	200	9.8	200	13.7	200							
2.4	0.75	200	8.0	200	11.2	200							
2.7	0.6	200	6.6	200	9.9	200							
3.0	0.5	200	5.4	200	8.3	200							
3.3	0.45	200	4.4	200	6.5	200							
3.5	0.4	200	3.8	200	5.1	200							
3.6	0.38	200	2.9	200	4.2	200							
4.0	0.3	200	2.5	200	3.6	200							
4.25	0.28	200	2.4	200	3.4	200							
4.5	0.26	200	1.8	200	2.7	200							
4.25	1.0	200	1.6	200	2.4	200							



<p>Townparks, Ardee, Co. Louth, Ireland, A92 AP64 Tel: +353 41 6856372 Fax: +353 41 6857216 Email: info@ardeeprecastconcrete.ie Web: www.ardeeprecastconcrete.ie</p>	<p>Client ARDEE PRECAST CONCRETE</p> <p>Project PRECAST LINTELS</p> <p>Title 100x150dp LINTELS DATA SHEET</p>	Rev.	Date	By	Details Of Revision				
		Date	11/08/21	Sheet Size	A4	A4 Scales		NTS	
		Drawn	KP	Eng.	AK	Chk.	RG	App'd	RG
<p>Consulting Structural & Civil Engineers 6 Windsor Place, Dublin 2, D02 AV97 T: +353 (0)1 693 1908 E: admin@walshgoodfellow.com</p>	Drawing No.	APC-753-B				Rev.	Suitability		
							C0	A	