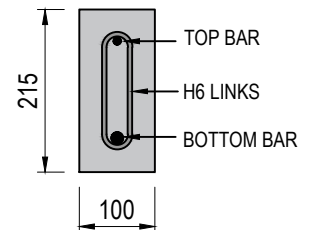
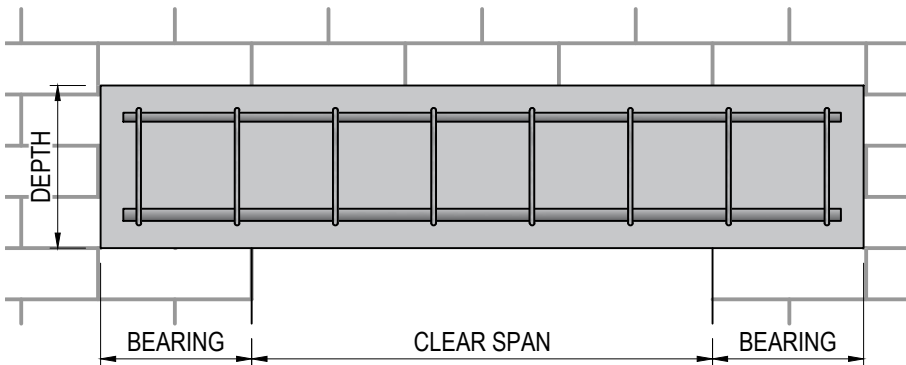


APC - 100mm WIDE X 215mm DEEP PRECAST CONCRETE LINTEL

NOTES:

1. TOP AND BOTTOM COVER TO LINK = 30mm
2. CONCRETE COVER IS BASED ON AN EXPOSURE CLASS OF XC3/4 WITH A MINIMUM COVER OF 25mm AND A DEVIATION OF 5mm
3. CONCRETE STRENGTH C35/45
4. ULS LOADS PROVIDED ARE PERMITTED LOADS IN ADDITION TO THE SELF WEIGHT OF THE LINTELS
5. LOAD CAPACITY AND BEARING LENGTHS ASSUME UDL LOADING ONLY. ANY OTHER TYPES OF LOADING OR COMBINATION REQUIRES VERIFICATION BY THE LINTEL SUPPLIER.
6. LINTEL SELF WEIGHT (UNFACTORED) = 0.52kN/m
7. DESIGN OF LINTELS IS TO EN1992-1-1
8. DETAILING OF REINFORCEMENT IS TO EN1992-1-1 AND TO BS8666
9. CALCULATIONS ARE BASED ON $\gamma_s=1.05$ AND $\gamma_c=1.4$, TO EN1992-1-1 ANNEX A.
10. SOLID BLOCK, BRICK OR CONCRETE BEARING PAD TO SUPPORT DIRECTLY UNDER LINTEL. NO CUT BLOCKS TO BE USED.
11. BLOCK STRENGTH FOR APPLIED BEARING AREA NEEDS TO BE CONFIRMED BY STRUCTURAL DESIGNER
12. BLOCK STRENGTHS MIN 7.5 N/mm²
13. ALL VERTICAL FACES OF LINTELS WOULD HAVE A TAPER OF APPROX. 5mm

LINTEL SIZE		100mm WIDE X 215mm DEEP										
Top Bar	1No. H10	1No. H10	1No. H10	1No. H10	1No. H10	1No. H10	1No. H10	1No. H10	1No. H10	1No. H12	1No. H12	
Btm Bar	1No. H10	1No. H12	1No. H16	1No. H16	1No. H20	1No. H20	1No. H20	1No. H20	1No. H20	1No. H20	1No. H20	
Links	6mm Ø links @ 130mm c/c					6mm Ø links @ 125mm c/c						
BEARING SPA [m]	ULS [kN/m]	BEARING Min [mm]	ULS [kN/m]	BEARING Min [mm]	ULS [kN/m]	BEARING Min [mm]	ULS [kN/m]	BEARING Min [mm]	ULS [kN/m]	BEARING Min [mm]	ULS [kN/m]	BEARING Min [mm]
0.6	56.3	200	115.3	200	151.8	200	238.3	250	238.3	250	238.3	250
0.7	60.3	200	84.4	200	113.8	200	178.8	250	178.8	250	178.8	250
0.9	40.2	200	66.4	200	90.8	200	131.6	250	131.6	250	131.6	250
1	33.6	200	47.3	200	78.3	200	110.5	250	110.5	250	110.5	250
1.2	24.5	200	34.5	200	57.3	200	81.0	250	81.0	250	81.0	250
1.5	16.4	200	23.2	200	38.7	200	54.7	250	54.7	250	54.7	250
1.8	11.7	200	16.5	200	27.7	200	39.3	250	39.3	250	39.3	250
2	9.5	200	13.6	200	22.8	200	32.4	250	32.4	250	32.4	250
2.4	6.6	200	9.5	200	16.1	200	23.0	250	23.0	250	23.0	250
2.7	5.2	200	7.5	200	12.8	200	18.3	250	18.3	250	18.3	250
3	4.1	200	6.0	200	10.4	200	14.9	250	14.9	250	14.9	250
3.3	3.3	200	4.9	200	8.6	200	12.4	250	12.4	250	12.4	250
3.5	2.9	200	4.3	200	7.6	200	11.0	250	11.0	250	11.0	250
3.6	2.7	200	4.1	200	7.2	200	10.4	250	10.4	250	10.4	250
4	2.1	200	3.2	200	5.8	200	8.4	250	8.4	250	8.4	250
4.25	1.8	200	2.8	200	5.0	200	7.4	250	7.4	250	7.4	250
4.5	1.5	200	2.4	200	4.5	200	6.6	250	6.6	250	6.6	250



<p>Townparks, Ardee, Co. Louth, Ireland, A92 AP64 Tel: +353 41 6856372 Fax: +353 41 6857216 Email: info@ardeeprecastconcrete.ie Web: www.ardeeprecastconcrete.ie</p>	<p>Client ARDEE PRECAST CONCRETE</p> <p>Project PRECAST LINTELS</p> <p>Title 100x215dp LINTELS DATA SHEET</p>	Rev.	Date	By	Details Of Revision						
		Date	11/08/21	Sheet Size	A4	A4 Scales	NTS	App'd	RG		
<p>Consulting Structural & Civil Engineers 6 Windsor Place, Dublin 2, D02 AV97 T: +353 (0)1 693 1908 E: admin@walshgoodfellow.com</p>	<p>Drawing No. APC-751-B</p>	Drawn	KP	Eng.	AK	Chk.	RG	Rev.	C0	Suitability	A