

Note – Patented JJ Hook System shown.  
Block available with/without this system.

Anti-climb Coping  
Corner Unit.

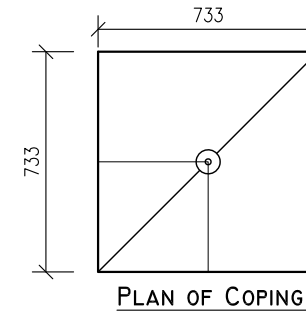
Anti-Climb Coping  
Unit.  
See APC-905-3

Wall Extension  
Unit  
See APC-905-4

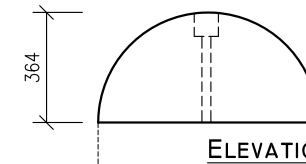
Ballast Block –  
Type 2 (4T)  
See APC-905-2

Ballast Block wall  
extension, Corner  
Unit.

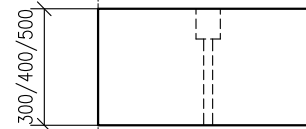
Ballast Block  
Type-2 Corner Unit.



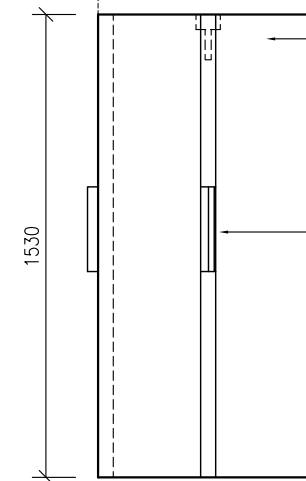
PLAN OF COPING.



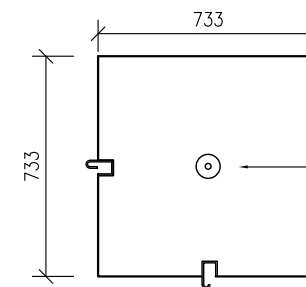
ELEVATION OF CORNER COPING UNIT.



ELEVATION OF CORNER EXTENSION UNIT.



ELEVATIONS OF MAIN BLOCK CORNER UNIT.



PLAN OF MAIN BLOCK CORNER UNIT.

M20  $\emptyset$  bolt with suitable  
washer & nut bolted thru'  
coping to threaded lifting  
socket within Ballast Block.

30mm  $\emptyset$  sleeve which is  
recessed to allow for M20  
bolt with suitable washer & nut.

20mm  $\emptyset$   
recessed lifting  
sockets. (4No)

Patented JJ Hook  
System. 2No per unit,  
1 on each side.

20mm  $\emptyset$   
recessed lifting  
sockets. (4No)

• DO NOT SCALE USE FIGURED DIMENSIONS ONLY.  
• ALL DIMENSIONS TO BE CHECKED ON SITE.  
• A.P.C TO BE INFORMED OF ANY DISCREPANCIES  
BEFORE WORK PROCEEDS.

Revision:	Description:	Drawn By:	Date:
A	Dimensions altered.	ND	08/01/16
B	Notation amended.	ND	26/05/20

Project: Technical Data Sheet		
Title: Ancillary Items for Ballast Block Type 2. Corner Units.		
Drawing No: <b>APC - 905-5</b>	Revision: <b>B</b>	Date: 08/01/2016

Sheet Size: <b>A3</b>
Drawing Scale: <b>1:25</b>
Drawn By: <b>N.D.</b>
Checked By:



**Ardee Precast Concrete Ltd.**  
Townparks Ardee Co. Louth  
Tel. +353(0)41 6856372  
Fax. +353(0)41 6857216  
Email us at info@ardeeprecastconcrete.ie  
Visit us at www.ardeeprecastconcrete.ie

© COPYRIGHT: Ardee Precast Concrete.  
This drawing or any part thereof may not be copied or  
otherwise reproduced without the written permission of  
Ardee Precast Concrete.