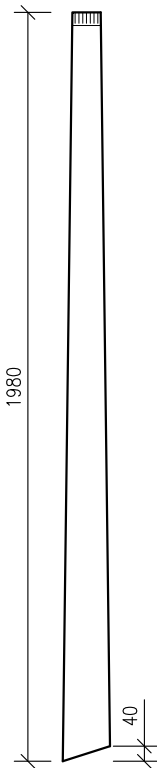
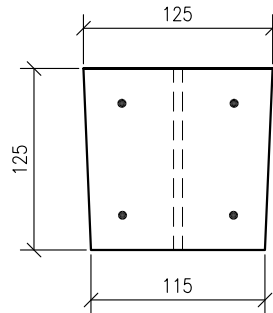


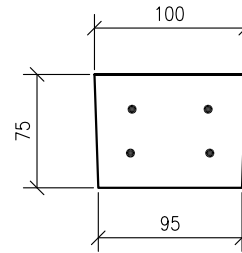
ELEVATION OF POST.



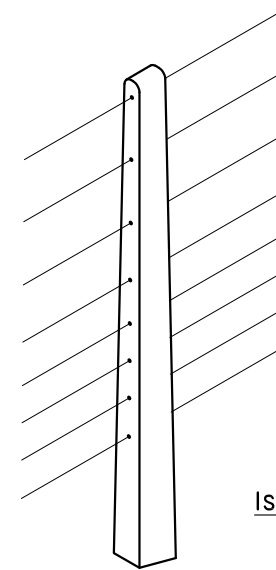
SIDE ELEV. OF POST.



BOTTOM OF POST.



TOP OF POST.



ISOMETRIC VIEW.

C35/45 concrete @ 28 days used in the manufacture of this unit.

This product complies with IS EN 12839:2012 & BS 1722-2 2006 incl. Annex A.

Steel reinforcing consists of 4No. R6mm bars with 20mm cover (minimum) & 30mm at ends. Rebar located by patent plastic spacers.

D. Title block amended.

May 2020

- DO NOT SCALE USE FIGURED DIMENSIONS ONLY.
- ALL DIMENSIONS TO BE CHECKED ON SITE.
- A.P.C TO BE INFORMED OF ANY DISCREPANCIES BEFORE WORK PROCEEDS.

© COPYRIGHT: Ardee Precast Concrete.
This drawing or any part thereof may not be copied or otherwise reproduced without the written permission of Ardee Precast Concrete.

Project:

TECHNICAL DATA SHEET.

Title:

1.98M INTERMEDIATE FENCE POST.

Drawing No:

APC - 400

Revision:

D

Date:

07-10-2011

Sheet Size:

A4

Drawing Scale:

1:20, 1:5

Drawn By:

N.D.

Checked By:



Ardee Precast Concrete Ltd.

Townparks
Ardee
Co. Louth

Tel. +353(0)41 6856372
Fax. +353(0)41 6857216

Email us at info@ardeeprecastconcrete.ie
Visit us at www.ardeeprecastconcrete.ie