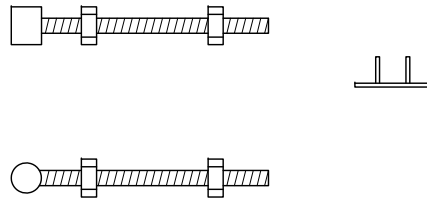
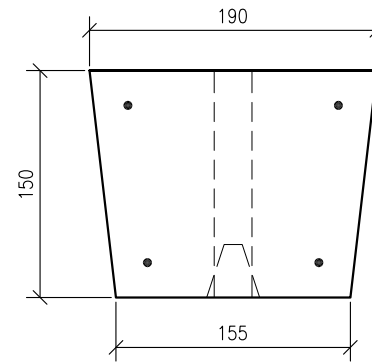


25mm  $\varnothing$  hole to accommodate typical galv. steel gate top hanger.

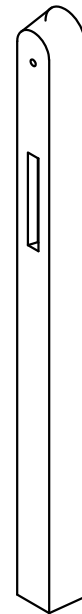
Pocket for gate closing bar. Size 375 long x 35 (tapered to 12mm) wide x 35mm deep.



Typical galvanised steel gate top hanger & heel.



SECTION THRU' POST.



ISOMETRIC VIEW.

C35/45 concrete @ 28 days used in the manufacture of this unit.

This product complies with IS EN 12839:2012 & BS 1722-2 2006 incl. Annex A.

Steel reinforcing consists of 4No R8mm bars with 20mm cover (minimum) & 30mm at ends. Rebar located by patent plastic spacers.

Gate post can accommodate typical gate top hanger.

Post can be supplied with galv. steel top hanger & heel. (extra-over)

WEIGHT OF POST = 140KG.

ELEVATION OF POST.

ELEVATION OF POST.

A. Notation amended.

March '14

- DO NOT SCALE USE FIGURED DIMENSIONS ONLY.
- ALL DIMENSIONS TO BE CHECKED ON SITE.
- A.P.C TO BE INFORMED OF ANY DISCREPANCIES BEFORE WORK PROCEEDS.

© COPYRIGHT: Ardee Precast Concrete.  
This drawing or any part thereof may not be copied or otherwise reproduced without the written permission of Ardee Precast Concrete.

Project:

**TECHNICAL DATA SHEET.**

Sheet Size:

**A4**

Title:

**GATE POST.**

Drawing Scale:

**1:20, 1:5**

Drawn By:

**N.D.**

Drawing No:

**APC - 410**

Revision:

**A**

Date:

**07-10-2011**

Checked By:



**Ardee Precast Concrete Ltd.**

Townparks  
Ardee  
Co. Louth

Tel. +353(0)41 6856372  
Fax. +353(0)41 6857216

Email us at [info@ardeeprecastconcrete.com](mailto:info@ardeeprecastconcrete.com)  
Visit us at [www.ardeeprecastconcrete.com](http://www.ardeeprecastconcrete.com)