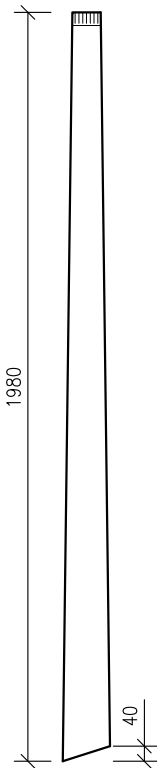
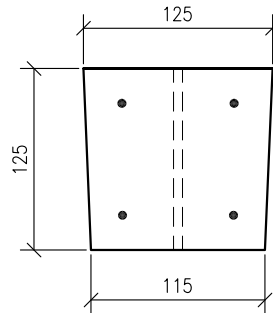


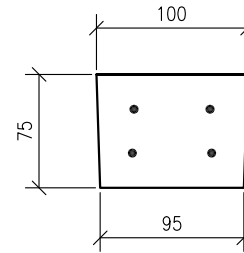
ELEVATION OF POST.



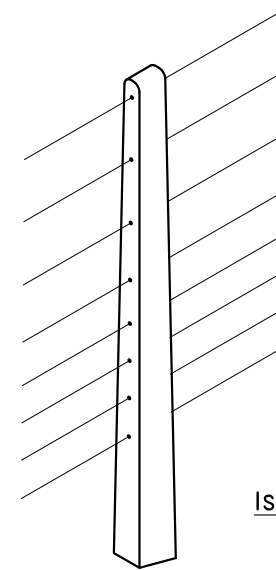
SIDE ELEV. OF POST.



BOTTOM OF POST.



TOP OF POST.



ISOMETRIC VIEW.

C35/45 concrete @ 28 days used in the manufacture of this unit.

This product complies with IS EN 12839:2012 & BS 1722-2 2006 incl. Annex A.

Steel reinforcing consists of 4No. R6mm bars with 20mm cover (minimum) & 30mm at ends. Rebar located by patent plastic spacers.

C. Notation amended.

March '14

- DO NOT SCALE USE FIGURED DIMENSIONS ONLY.
- ALL DIMENSIONS TO BE CHECKED ON SITE.
- A.P.C TO BE INFORMED OF ANY DISCREPANCIES BEFORE WORK PROCEEDS.

© COPYRIGHT: Ardee Precast Concrete.  
This drawing or any part thereof may not be copied or otherwise reproduced without the written permission of Ardee Precast Concrete.

Project:

**TECHNICAL DATA SHEET.**

Title:

**1.98M INTERMEDIATE FENCE POST.**

Drawing No:

**APC - 400**

Revision:

**C**

Date:

**07-10-2011**

Sheet Size:

**A4**

Drawing Scale:

**1:20, 1:5**

Drawn By:

**N.D.**

Checked By:



**Ardee Precast Concrete Ltd.**

Townparks  
Ardee  
Co. Louth

Tel. +353(0)41 6856372  
Fax. +353(0)41 6857216

Email us at [info@ardeeprecastconcrete.com](mailto:info@ardeeprecastconcrete.com)  
Visit us at [www.ardeeprecastconcrete.com](http://www.ardeeprecastconcrete.com)