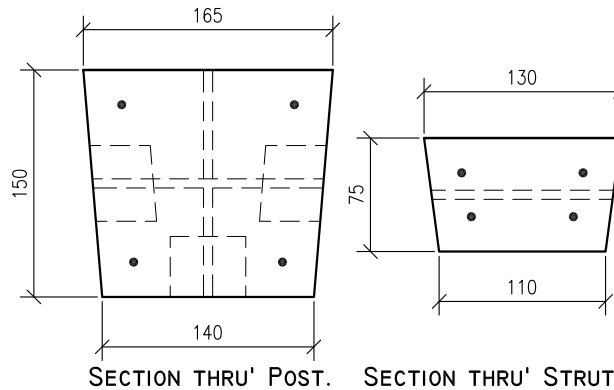


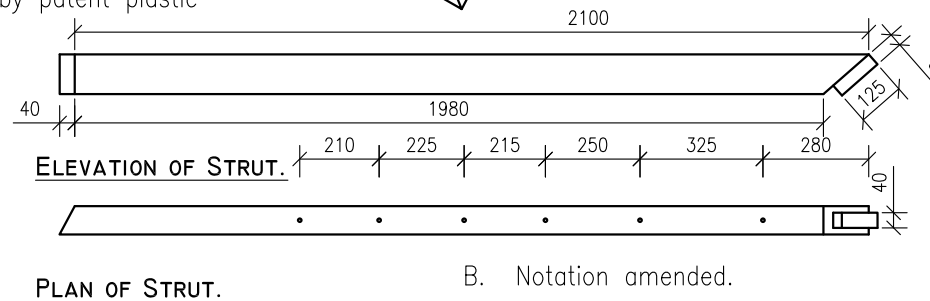
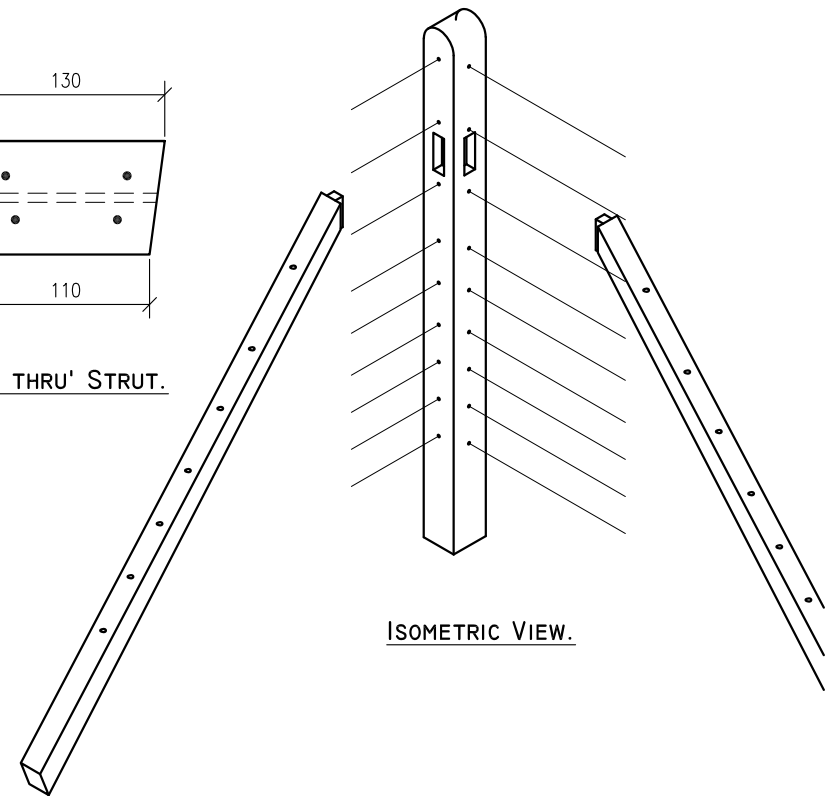
Pocket for strut on 3 sides of unit. Size 150 high x 50 wide x 40mm deep.



C35/45 concrete @ 28 days used in the manufacture of this unit.

This product complies with IS EN 12839:2012 & BS 1722-2 2006 incl. Annex A.

Steel reinforcing to strainer & strut consists of 4No R8mm bars & 4No R6mm bars respectively. All with 20mm cover (minimum) & 30mm at ends. Rebar located by patent plastic spacers.



FOR USE WITH I.98M INTERMEDIATE FENCING POST SYSTEM.

B. Notation amended.

June '15

- DO NOT SCALE USE FIGURED DIMENSIONS ONLY.
- ALL DIMENSIONS TO BE CHECKED ON SITE.
- A.P.C TO BE INFORMED OF ANY DISCREPANCIES BEFORE WORK PROCEEDS.

© COPYRIGHT: Ardee Precast Concrete.  
This drawing or any part thereof may not be copied or otherwise reproduced without the written permission of Ardee Precast Concrete.

Project:

**TECHNICAL DATA SHEET.**

Sheet Size:

**A4**

Title:

**CORNER/3-WAY 2.10M STRAINER FENCING POST & STRUT.**

Drawing Scale:

**1:20, 1:5**

Drawn By:

**N.D.**

Drawing No:

**APC - 402**

Revision:

**B**

Date:

**07-10-2011**

Checked By:



**Ardee Precast Concrete Ltd.**

Townparks  
Ardee  
Co. Louth

Tel. +353(0)41 6856372  
Fax. +353(0)41 6857216

Email us at [info@ardeeprecastconcrete.com](mailto:info@ardeeprecastconcrete.com)  
Visit us at [www.ardeeprecastconcrete.com](http://www.ardeeprecastconcrete.com)